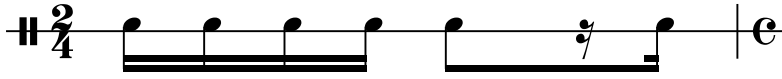


STORY
di JOHN CAGE
2^ VOCE

Triangle 

ONCE UP-ON A TIME A TIME A

2



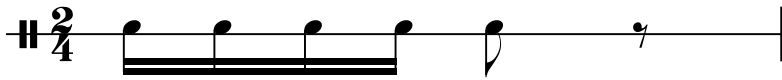
ONCE UP - ON A TIME A

3



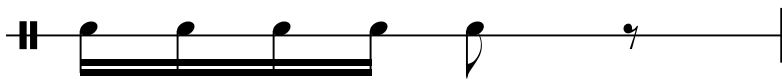
ONCE UP ON A TIME A TIME A TIME A

4



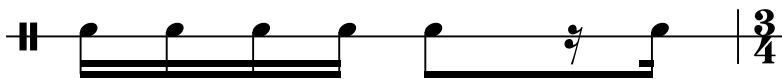
ONCE UP - ON A TIME

5



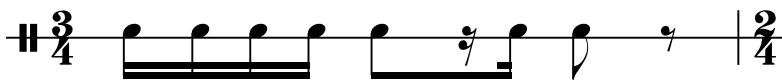
ONCE UP - ON A TIME

6



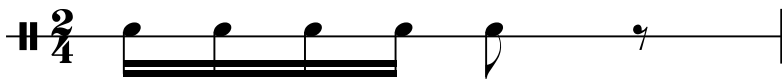
ONCE UP - ON A TIME A

7



ONCE UP - ON A TIME A TIME

8



ONCE UP - ON A TIME

[Title]

2

9

Musical staff for measure 9, starting with a double bar line and a key signature of one sharp (F#). The melody consists of a half note G4, a half note A4, a half note B4, a quarter note C5, a quarter rest, and a quarter note D5.

UP - ON A TIME

10

Musical staff for measure 10, starting with a double bar line and a key signature of one sharp (F#). The melody consists of a half note G4, a half note A4, a half note B4, a half note C5, a quarter note D5, and a quarter note E5.

UP - ON A TIME A

11

Musical staff for measure 11, starting with a double bar line and a key signature of one sharp (F#). The melody consists of a half note G4, a half note A4, a half note B4, a quarter note C5, a quarter note D5, a quarter rest, and a quarter note E5.

IME UP - ON A TIME

12

Musical staff for measure 12, starting with a double bar line and a key signature of one sharp (F#). The melody consists of a half note G4, a half note A4, a half note B4, a half note C5, a half note D5, a half note E5, and a half note F#5.

UP - ON A TIME UP - ON A

13

Musical staff for measure 13, starting with a double bar line and a key signature of one sharp (F#). The melody consists of quarter notes G4, A4, B4, C5, D5, E5, and F#5, with a quarter rest following each note.

WORL - D WORL - D WORL - D WORL - D

17

Musical staff for measure 17, starting with a double bar line and a key signature of one sharp (F#). The melody consists of quarter notes G4, A4, B4, C5, D5, E5, and F#5, with a quarter rest following each note. The measure ends with a 3/4 time signature.

WORL - D WORL - D WORL - D WORL - D

21

Musical staff for measure 21, starting with a double bar line and a 3/4 time signature. The melody consists of a half note G4, a half note A4, a half note B4, a quarter note C5, a quarter note D5, a quarter rest, and a quarter note E5. The measure ends with a 2/4 time signature.

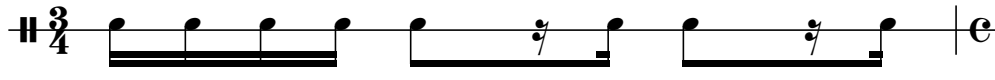
ONCE UP - ON A TIME A TIME

22

Musical staff for measure 22, starting with a double bar line and a 2/4 time signature. The melody consists of a half note G4, a half note A4, a half note B4, a quarter note C5, a quarter note D5, a quarter rest, and a quarter note E5. The measure ends with a 3/4 time signature.

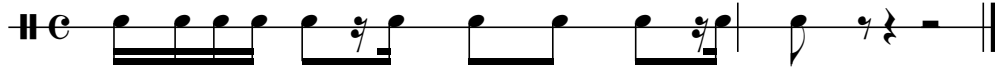
UP - ON A TIME A

23



TIME UP - ON A TIME A TIME A

24



ONCE UPON A TIME THE WORLD WAS ROUND A - ROUND.